

North-South Interconnector: Article 9(4) Report

Diarmuid Collins, SAO.
20 August, 2015.

The Project



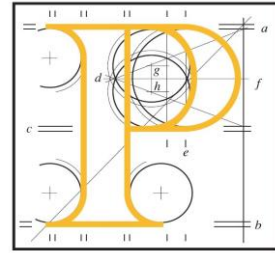
- North-South Electricity Interconnector.
- 400 kV overhead line circuit connecting Woodland, County Meath and Turleenan, County Tyrone.
- 138km long (of which 34km in Northern Ireland).

E.U. Regulation 347/2013



■ Article 9.4.

The project promoter shall prepare a report **summarising the results of activities related to the participation of the public** prior to the submission of the application file, including those activities that took place before the start of the permit granting process. The project promoter shall submit that report together with the application file to the competent authority. Due account shall be taken of these results in the comprehensive decision.



PCI Permit Process

- Pre-Application Procedure:
 - Concept for Public Participation.
 - PCI Application File.
 - Article 9.4 Report.
- Statutory Permit Granting Procedure.
- PCI Comprehensive Decision.

Public Participation Concept (1)



- Public Participation Concept (PPC) submitted 31 July 2014.
- PPC modified 10 September 2014.
- Modifications:
 - 15 Page Leaflet
 - History of Project.
 - Information on Regulation.
 - Status as PCI.
 - Implications of Status.
 - Roadmap for Project.

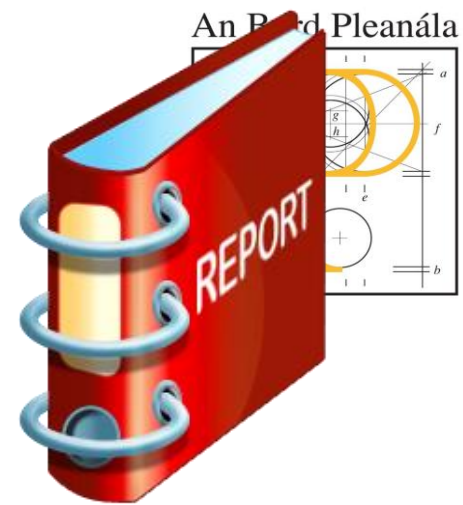
Public Participation Concept (2)



- Modifications continued:
 - Ads in 2 national newspapers
 - Notifying public about leaflet.
 - Scope of project.
 - Status as PCI.
 - Indicative date for lodgement of application.

Report

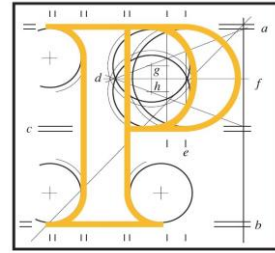
- Submitted 9 June 2015.
- 69 pages and Appendices.
- Summary of results of activities.
- All activity periods covered.



Report Structure



- Introduction.
- Regulation.
- Results of Activities 2007 to 2010.
- Results of Activities 2010 to 2013.
- Preferred Project Solution.
- Landowner Participation.
- Post consultation and prior to planning application.
- Conclusion.



Reporting of Results of Activities

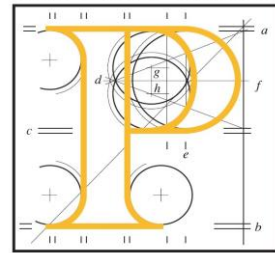
- Level of participation.
- Nature of feedback i.e. issues.
- Responses to Issues.
- How feedback influenced the project.



Level of Participation

■ Strategic Constraints Phase

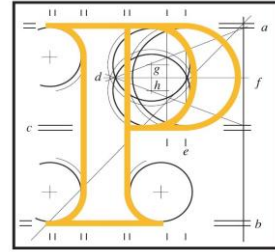
Method of Stakeholder Feedback	No. of Submissions
Telephone Line	1,200
Feedback Forms	4,410
E-mails	939
Written Submissions	1,009
Individual Petition Signatories	2,596
Open Days	800+
Small Group Meetings	220 people invited
Total	11,174+



Issues Raised by Public

- Ecology and Nature.
- Heritage and Listed Buildings.
- Culture and Sport.
- Tourism and Development.
- Livestock and Racehorses.
- Mining and Airfields.

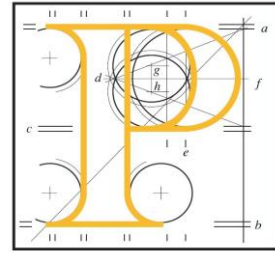
Response to Issues and Influence on Project



- Queries answered.
- Brochures and booklets.
- Open days.
- Further investigation and research.
- Technical reports.

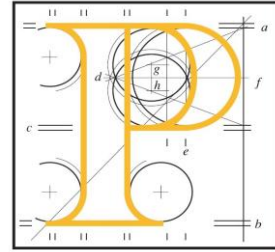
- Content of application.

Preliminary Re-evaluation Public Participation/ Issues



- 18 written submissions.
- Issues included:
 - Over-grounding.
 - Superior technology.
 - Alternatives.
 - Health.

Preliminary Re-evaluation Issues/Response/Influence



- Property values.
- Methodology.
- Proximity to schools.
- Relationship to wind farms.

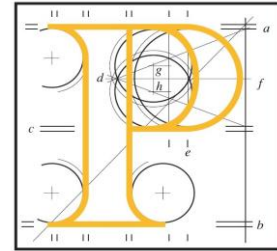
- Eirgrid extended consultation period.
- Local modifications.

Final Re-evaluation Report Public Participation



Method of Stakeholder Feedback	No. of Signatories
Project Briefing/Meeting	18
Information Centres & Telephone Line	22
Written Submissions (including email)	58
Open Days (First Series)	70
Open Evening Events (Monaghan) (Second Series)	500
Total	668

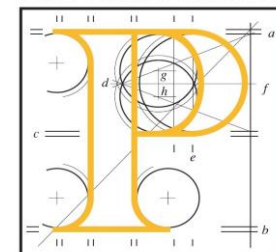
Response to Issues and Influence on Project



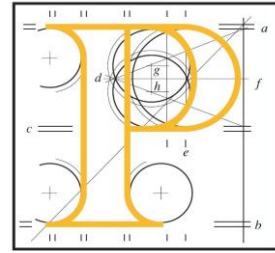
- Issues included:
- Project need.
- Scope.
- Routing.
- International comparisons.
- Structure design.
- Compensation.
- Final re-evaluation report.
- Modifications.
- EIS.

Preferred Solution Report

Public Participation



Method of Stakeholder Feedback	No. of Submissions
Information Centres and Telephone Line	35
Written Submissions (including email)	27
Open Days	62
Total	124



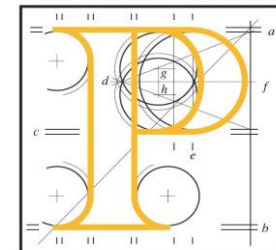
Preferred Solution Response

- Issues reviewed.
- Specific information e.g. bespoke maps.
- Addressed in EIS and application.

Landowner Participation



	Total	Percentage
Total No. Landowners	456	100%
Did not Engage	148	32%
Engaged	308	68%
Landholdings surveyed	115	25%*



Outcome of Landowner Engagement

	Total
Total No. Landowners	456
Landholdings surveyed	115
No. of Change Requests Received	57
No. of Change Requests Accommodated	30

Post Consultation and Prior to Planning Application

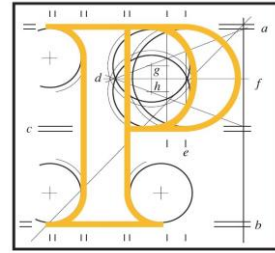
- Phone, Email, Web.
- Newsletter.
- Community Meetings.
- Chambers of Commerce.
- Landowner Engagement.
- LA Presentations.
- Joint Oireachtas Committee.



Post Consultation and Prior to Planning Application

- Independent Expert Panel.
- Grid25 Initiative.
- Community Update Brochure.
- Discussion Paper.
- Final Line Design.
- PCI Leaflet.
- SID Consultation Process.





Final Overview

- N-S Interconnector Timeline.
- Project Promoter Reports.
- EU and DG-Energy.
- Procedures Manual and Reporting Deadlines.